

CLIMB PROJECT

CLIMB has started: Kick-off meeting and first project steps

newsletter n 1



HELLO EVERYONE

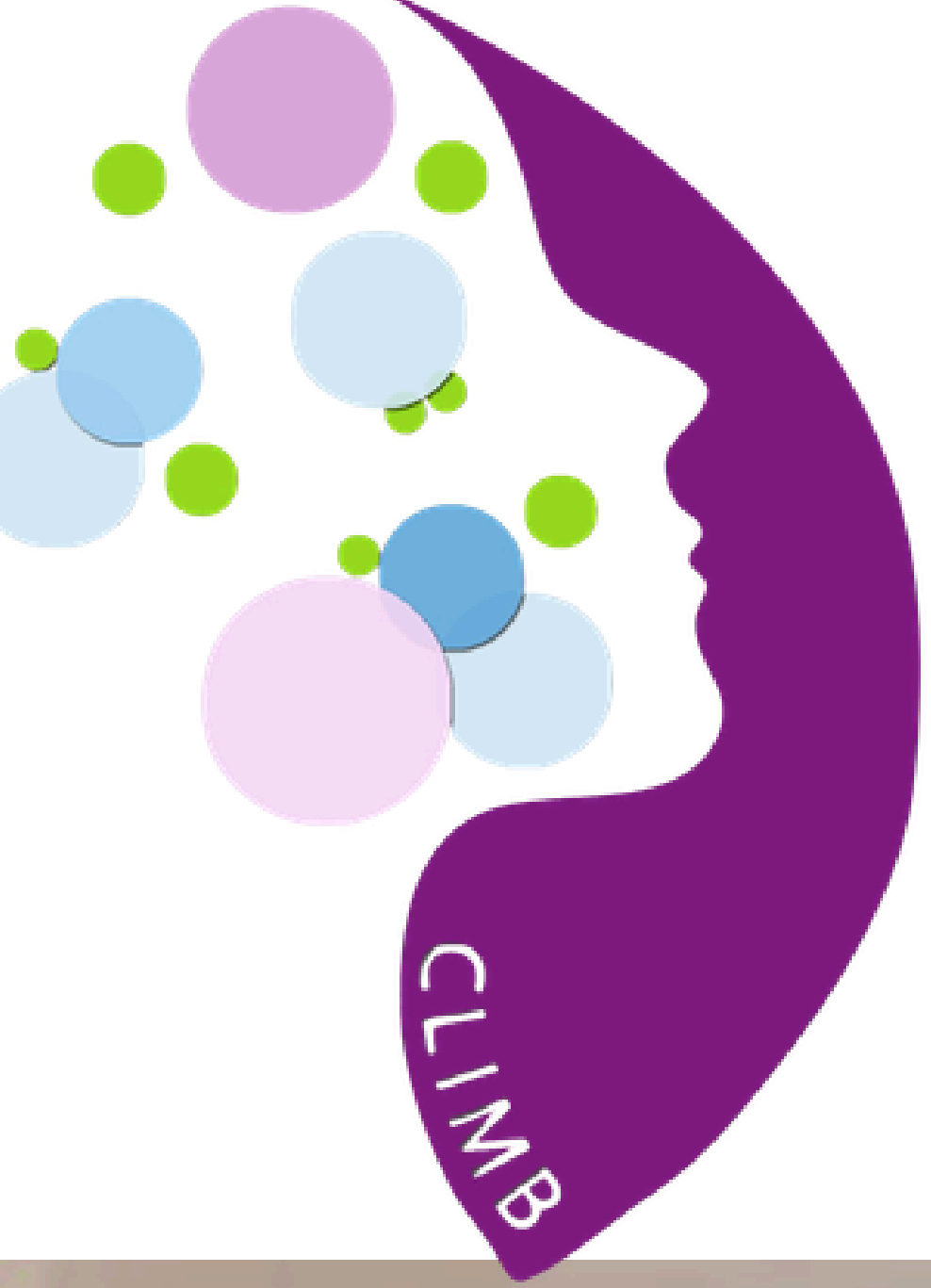
welcome to the first CLIMB newsletter. CLIMB is a European project focused on strengthening opportunities for women living in rural and inner areas, supporting them in exploring and developing entrepreneurial pathways.

CLIMB PROJECT 'S TEAM

Kick-off meeting: aligning the partnership

On the 11th December 2025, we held the Kick-off meeting, in Lucera hoset by Meridaunia, lead applicant of the project.. It has been a key moment to align on objectives, roles, timeline and working methods. This meeting helped us confirm the coordination setup, shared tools, and the operational plan for the months ahead





CLIMB PROJECT

newsletter n 1



What we have done so far

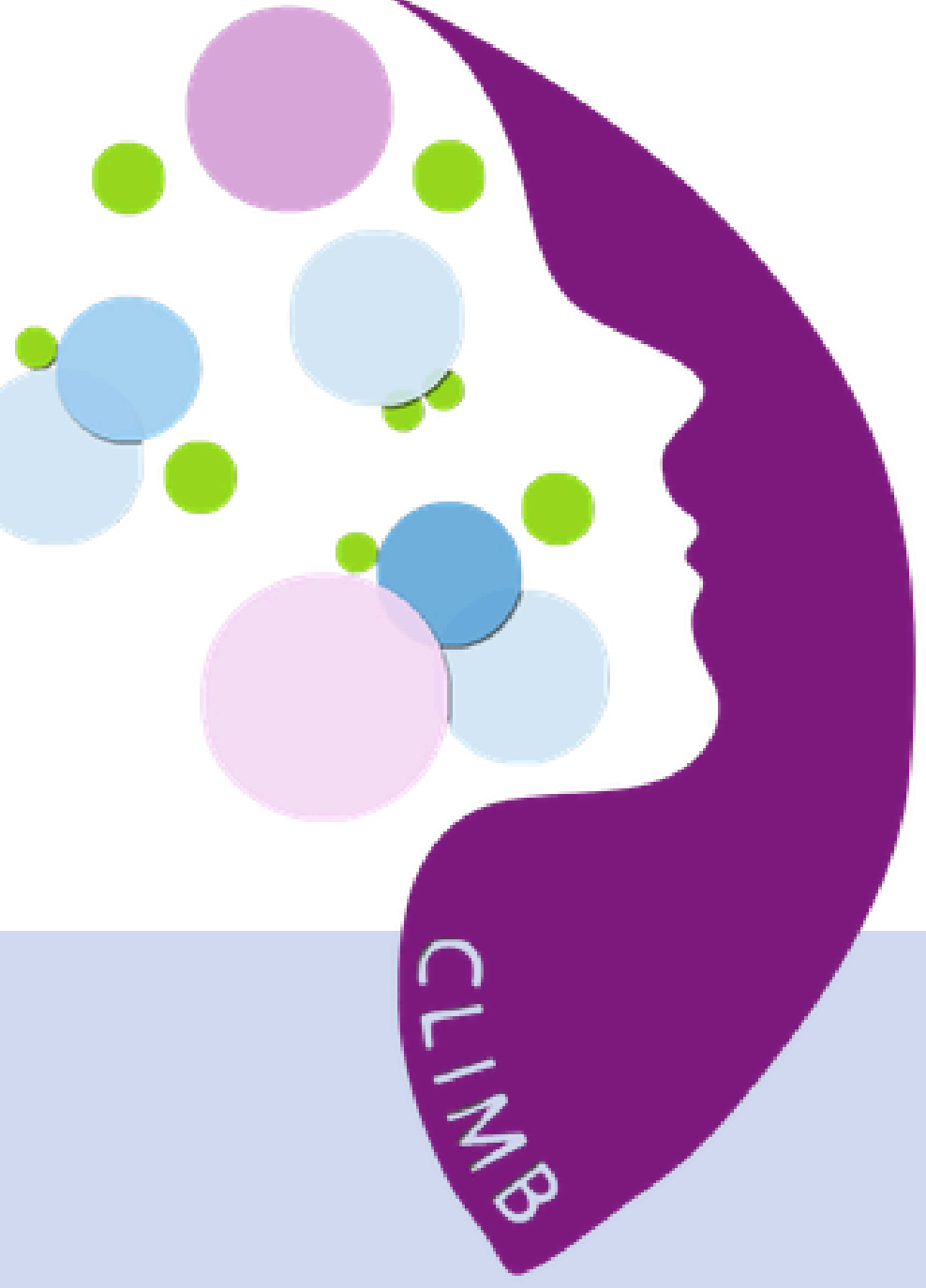
During this initial phase, partners launched the project's first core work strand: research and evidence building. The goal is to understand, through data and real voices, the barriers women face when approaching entrepreneurship in rural and inner areas, as well as the opportunities and enabling factors that can support them (networks, services, training, mentoring and digital tools).



Funded by the European Union. However, the views expressed are those of the author(s) alone and do not necessarily reflect the views of the European Union or the Erasmus+ National Agency – INDIRE. Neither the European Union nor the funding body can be held responsible for them.



**Co-funded by
the European Union**



CLIMB PROJECT

newsletter n 1

Meet the CLIMB partnership

CLIMB brings together organisations with complementary expertise to deliver research, training and digital tools:



Meridaunia (Italy) Coordinator. Local Action Group from Apulia Region. Territorial development organisation coordinating project management and dissemination, ensuring alignment across work packages and partner contributions.



UAB – Universitat Autònoma de Barcelona (Spain). Leads the research work on best practices and success factors and supports the evidence base for the training phase.



OECON (Greece). Leads the design of the training toolkit and supports quality monitoring and evaluation.



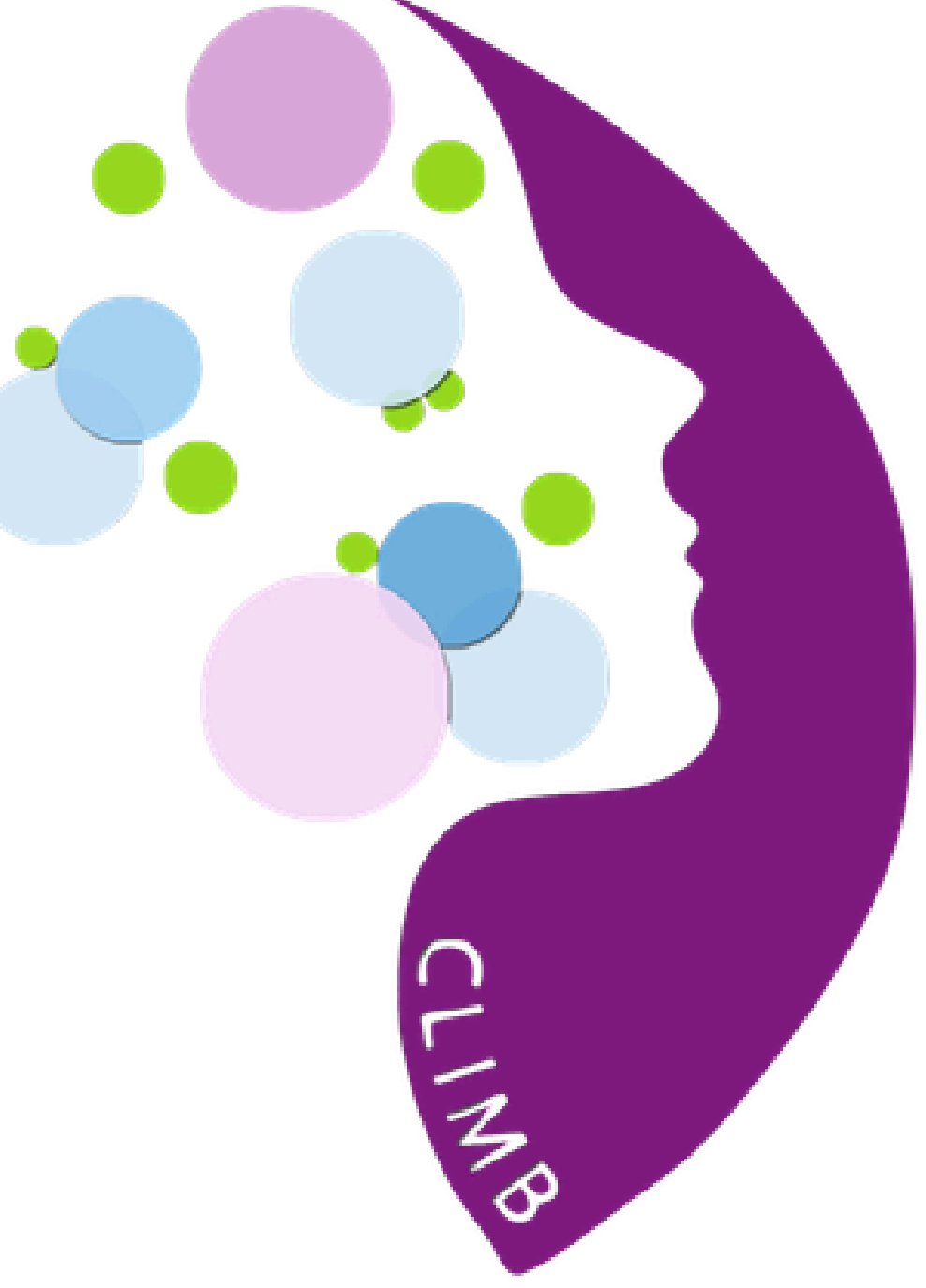
H. PRIORITY TRUST SERVICES

PTS – Priority Trust Services (Cyprus). Leads the development of the digital learning hub that will host the modules and enable online community features.



KGEM (Turkey). Coordinates piloting activities and feedback collection to test and improve training and platform components.





CLIMB PROJECT

newsletter n 1

What comes next

In the coming months we will intensify evidence collection and analysis (mapping, interviews and synthesis). These findings will directly inform the design of CLIMB's next outputs, including the upcoming training modules.

Stay connected:

If you are an organisation, practitioner or aspiring entrepreneur interested in CLIMB, you can contact us to stay informed and receive updates:

